



QUEEN OF PEACE CENTER

FY 2021

Impact Report

“I was able to find purpose in my life again, and make connections with other women who struggled in life the way I had.”

~ Rebecca



OUR VISION

To strengthen women, families, and the community we serve

OUR MISSION

Queen of Peace Center provides family-centered care for women with substance-use disorders, their families, and at-risk youth through treatment, prevention and education, and housing.

As demonstrated by the life of Jesus Christ, Queen of Peace Center works to build a future of peace for families.

OUR VALUES

Belief in the Possibilities
Passion for Service
Humble Spirit

CHIEF EXECUTIVE OFFICER

Sharon Spruell, MA, LPC, CCDP-D

BOARD OF DIRECTORS

PRESIDENT

Tony Kennedy

VICE-PRESIDENT

Charles Q. Brown

TREASURER

Eric Carlson

SECRETARY

Melissa Schmitt

MEMBERS OF THE BOARD

Mike Annis
Laura Boedges
Ron Faulbaum
Nancy Giljum
Jeff Jones

Karen Leeker

Dawn Lovelace

Donna McDonald

Josh McKean

Julia Mills

Michael Schumacher

Brian Sponsler

Addie Tompkins

Devon Young

EX OFFICIO

Theresa E. Ruzicka

ADVISORY BOARD

Adrienne Berra

Jon Carlson

LaVerne Lorenzini

George Marklin

Terese Mitchusson

EXECUTIVE DIRECTOR EMERITUS

Constance S. Neumann

OUR PARTNERS



“With a spirit of humility, we consider it a privilege to care for thousands of women, children, and families each year who are in various stages of their own recovery journey.”

As we enter a new year, I am amazed at our team's adaptability, resilience, and dedication as they navigated challenging transitions while caring for our clients face-to-face, virtually, and hybrid. We remained steadfast in encouraging healing for our women, children, and families. Recovery has always been our priority, even in the most difficult of times.

The impact of social distancing and isolation became ever more apparent in the past year. We ensured there was critical access to our services for those in recovery and their children. Families rely on us – and we are here for them – our doors and hearts remain open. Every time our women have the courage to knock, we answer.

I am pleased to look back on our achievements, including the transition of Our Lady of Perpetual Help (OLPH) Recovery Home to the first recovery home in St. Louis for women with children who are experiencing chronic homelessness and substance use disorders. OLPH Recovery Home provides a safe, sober living environment for up to 22 women and children. In our first year, we were able to house 45 people in our home so that their lifelong recovery journeys would continue with their families.

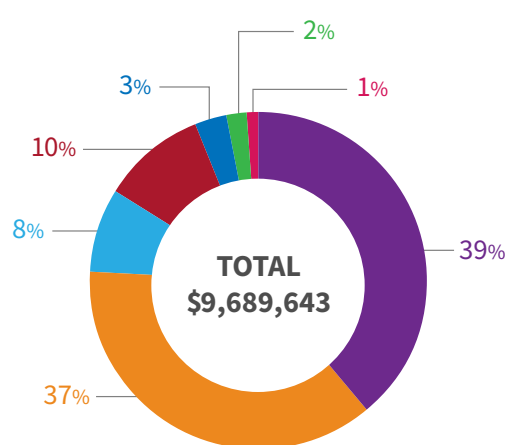
We welcomed 933 women into our substance-use residential and outpatient treatment programs. We safely housed 69 women and their children to break the cycle of substance use disorders and homelessness. Over the past 5 years, 92% of babies have been born substance-free. We consider it a privilege to care for each client as they walk their own recovery journey or are otherwise impacted by substance use disorders.

Looking ahead, we are focused on reaching more women and children. We are excited about our opportunities for growth this year utilizing new technology that will help support our clinicians, and implementing new programming for our clients to ensure we are providing the highest quality clinical care for those seeking treatment.

We remain committed to breaking down barriers for those we serve through our passion for service. We believe a life of peace is possible for everyone.

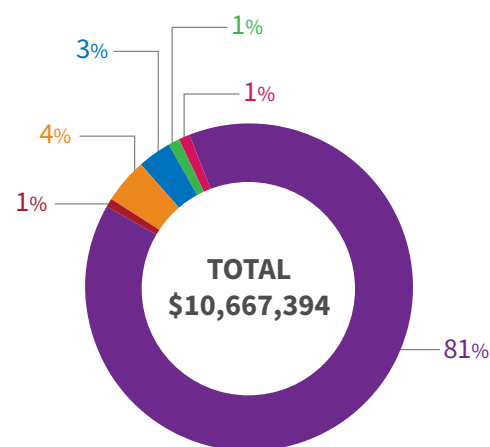
OPERATING REVENUE & EXPENSES

July 1, 2020 – June 30, 2021



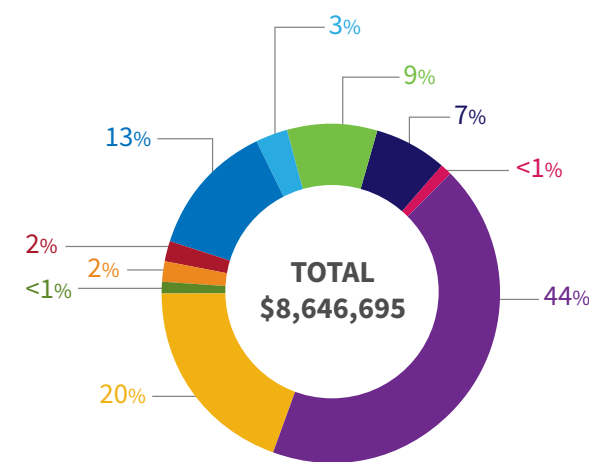
EXPENSES

Personnel Costs: \$3,784,553
 Aid to Individuals: \$3,588,793
 Occupancy: \$744,045
 Fees and Service: \$1,003,177
 Program Supplies: \$293,243
 Depreciation: \$183,155
 Other Expenses: \$92,677



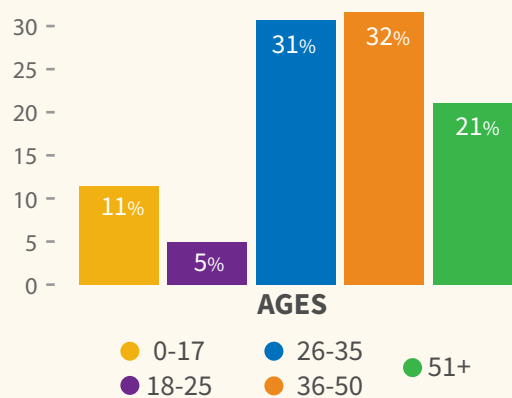
REVENUES

Government Fees and Grants: \$8,646,695
 Foundations: \$138,963
 Fundraising: \$380,734
 Catholic Charities & ACA: \$300,152
 United Way: \$63,125
 Other Income: \$864,996



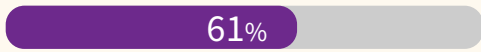
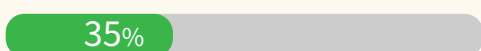
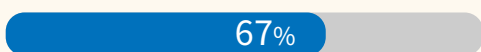
GOVERNMENT FEES & GRANTS

DMH Shelter Plus Care: \$3,762,614
 DMH CSTAR: \$1,755,212
 St. Louis City Homeless Services: \$15,428
 St. Louis County: \$142,702
 Mental Health Board: \$164,026
 SAMHSA: \$1,115,112
 Missouri Alliance: \$281,046
 PPP Loan Forgiveness: \$794,138
 CARES Act: \$607,321
 Other: \$9,096

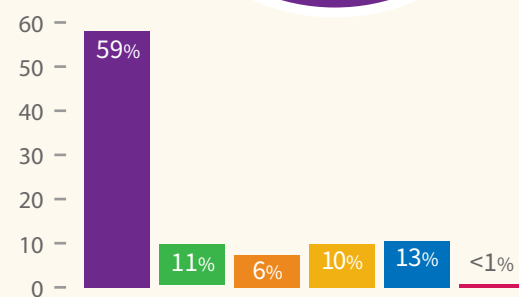
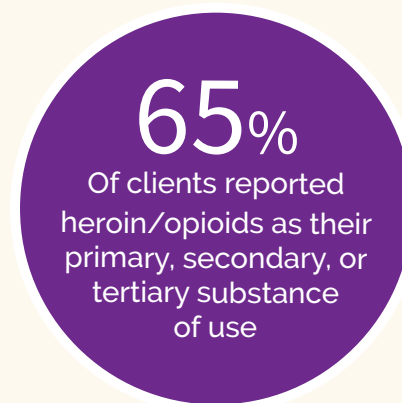
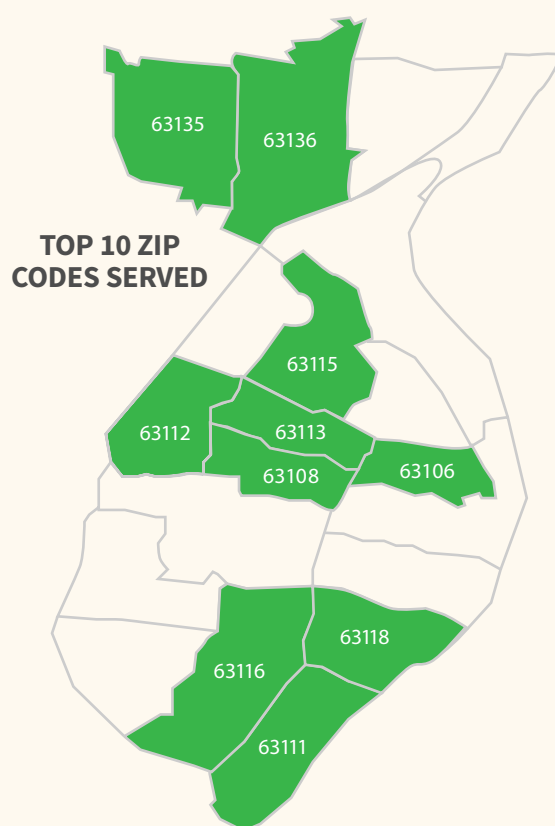


POPULATION

(Adult Women Only)



WHO QUEEN OF PEACE CENTER SERVES



*Methamphetamine/Amphetamine

SERVICES PROVIDED



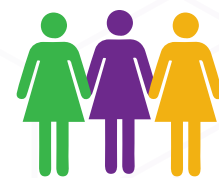
10,690
TELEHEALTH SERVICES PROVIDED
 in response to COVID-19 Pandemic



1,016 Total women and children served

*Excluding clients served in Shelter Plus Care

Queen of Peace Center has the only maternity home operated by a substance use treatment center in the state of Missouri.



100%
WOMEN AT ST. PHILIPPINE MATERNITY HOME
 were provided access to prenatal, postpartum, and primary healthcare



23,296
MEALS PROVIDED



1,393
BUS TICKETS PROVIDED



1,427
RIDES PROVIDED
 by QOPC transportation to remove barriers to access services

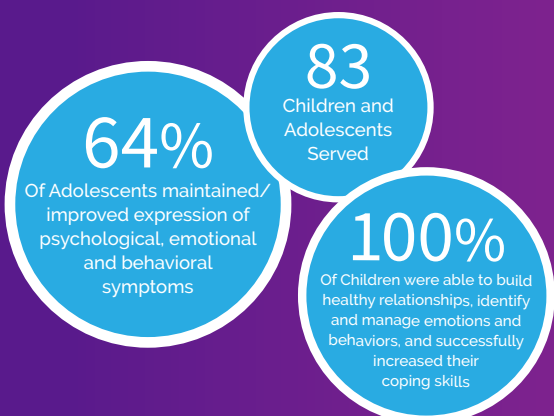


92%
OF THE BABIES BORN AT QOPC
 have been born substance-free over the past five years

IMPACT & OUTCOMES

PREVENTION & EDUCATION

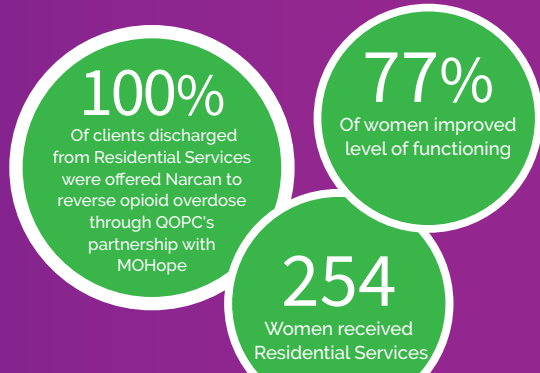
Queen of Peace Center developed our prevention and education programs to serve as a mechanism to stop substance use before it starts, to break the cycle of substance use disorders for families, and to provide additional resources to ensure a healthy lifestyle.



ADOLESCENT RESOURCE CENTER
 PARENTING EDUCATION PROGRAM
 NURTURING NETWORKS THERAPEUTIC CHILDCARE CENTER

TREATMENT

Family-Centered Behavioral Healthcare provides a full continuum of individualized early intervention, treatment, and long-term recovery support services to empower women, children, adolescents, and families impacted by substance use disorders, co-occurring disorders, and trauma. Services are provided in a residential and outpatient setting.



FAMILY-CENTERED BEHAVIORAL HEALTHCARE

HOUSING

Queen of Peace Center believes that housing coupled with treatment helps break the cycle of substance use disorders and homelessness. Supportive and Permanent Housing is provided at three locations.



ST. PHILIPPINE MATERNITY HOME
 OUR LADY OF PERPETUAL HELP RECOVERY HOME (OLPH)
 SHELTER PLUS CARE